




# MESH Ø 80cm

Design Francisco Gomez Paz, 2015

**LUCE  
PLAN**

Type:	Suspension	
Light source:	LED 53W 2700K Dimmable	EEL: A
Product use:	Indoor	
Materials:	Structure in steel, lenses in polycarbonate	
Colors:	Black	
Description:	The particular structure permits exceptional freedom in the control of luminance: it is possible to govern the intensity of the light.	

Insulation class:   



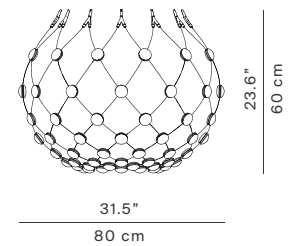
D86NPI 1D860N800001 black

Ceiling rose

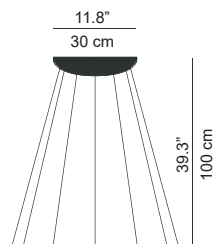
D86/T1/8 **1D860/T18001** dimmable phase cut, 1 m  
D86/T5/8 **1D860/T58001** dimmable phase cut, 5 m

D86/W1 1D860/W10001 wireless version, 1 m  
D86/W5 1D860/W50001 wireless version, 5 m

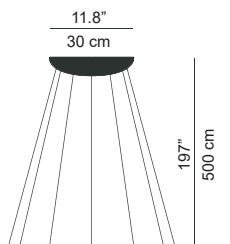
D86NPI



D86/T1/8  
D86/W1



D86/T5/8  
D86/W5



## SCENARIOS (only with D86/W1 or D86/W2)



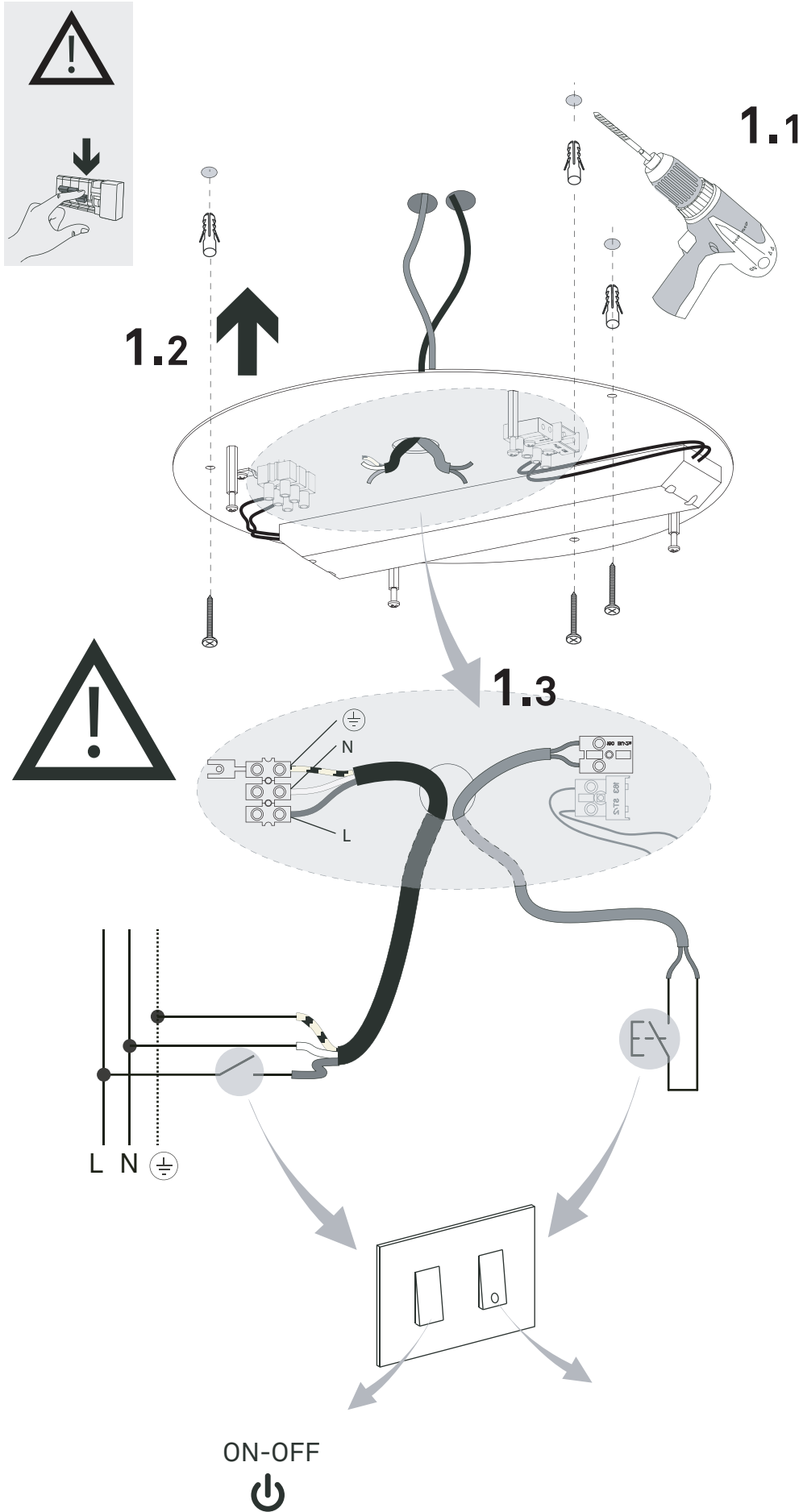
NOTE: The final shape of the luminaire may vary according to the length of the suspension cables.

# MESH

Design Francisco Gomez Paz, 2015

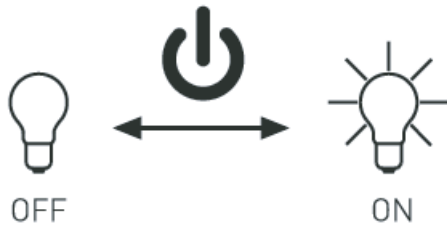
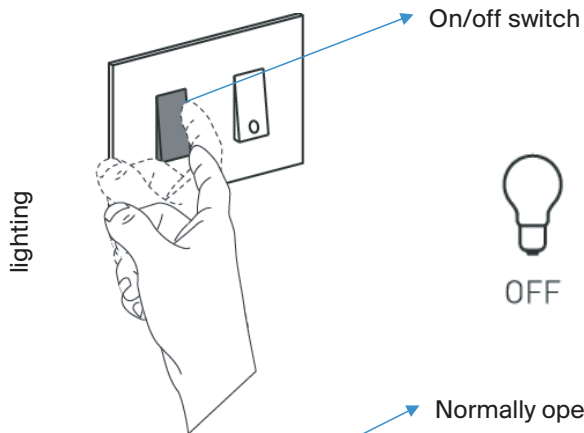
**LUCE  
PLAN**

## HOW TO INSTALL

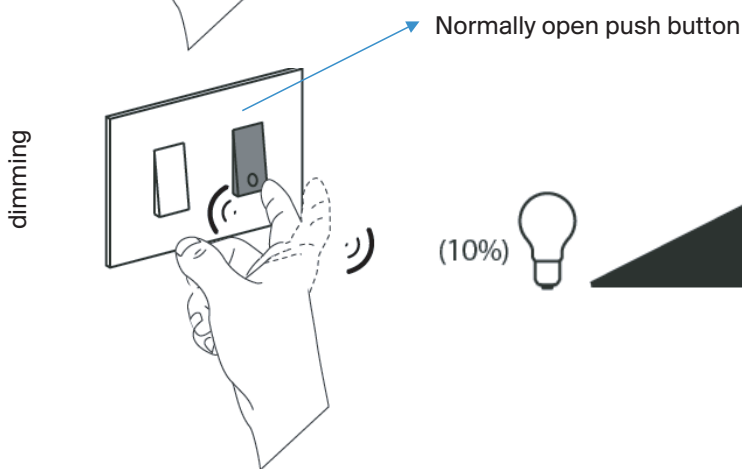


## HOW IT WORKS

Mesh is controlled by a dedicated electronic board which is located in the ceiling rose. The board needs to be connected to a normally open push button in order to dim the light or to control the different scenes, and to an on/off switch.



Press the switch to turn on the lamp



Press and hold to dim the lamp

## HOW IT WORKS (with D86W1 or D86W5)

choose the scenario

### PRESET SCENARIO

