

## Instructions



# Sillon Sebastian Herkner 2019

---

Congratulations with your new Sillon mirror, designed in 2019 by Sebastian Herkner. We hope you will enjoy using this product and follow these instructions to ensure correct installation. If you have any questions or comments, please do not hesitate to contact us by mail on:

[info@andtradition.com](mailto:info@andtradition.com)

# Sillon

## Sebastian Herkner

### 2019

---

Please read these instructions carefully and retain them for future reference to ensure that the product is used correctly. For your own safety, please study each step of this instruction manual first. Tradition is not responsible for any faults or damages caused by not following these instructions correctly.

#### Contents

The package contains one of the mirrors shown to the left:

- A SH4 (Backside)
- B SH5/SH6 (Backside)
- C SH7 (Backside)

#### Tools needed

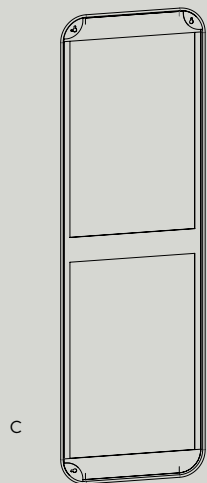
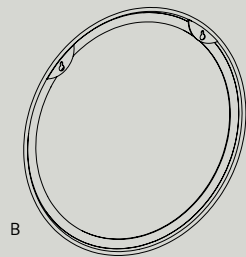
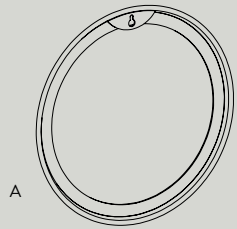
- Correct screws and plugs for the specific wall type
- Spirit level
- Electric drill
- Screwdriver

#### Safety precautions

- Dispose of plastic bag from packaging and do not allow children to play with it.
- Keep product well out of children's reach.
- The product is only intended for interior use.
- Do not attempt installation of product if you are not competent to do so yourself.
- Make sure that the appropriate screws and plugs are used to mount the mirror.

#### Cleaning instructions

- Use household glass cleaner for the mirror. To avoid damaging the surface of the mirror frame, always spray the glass cleaner onto a soft cloth and clean the mirror with the cloth. Do not spray directly on the mirror.
- For mirrors in stainless steel, use a cleaning detergent specifically for stainless steel. Do not use cleaning agents not developed specifically for stainless steel.
- For mirrors in brass, use a soft dry cloth when cleaning the brass and dry immediately after. Avoid abrasive cleaning agents.
- Do not use any abrasive cleaning tools such as steel wool, scouring sponges or stiff brushes.



#### Step 1

Using a spirit level, mark the placement of the mirror with a pencil.

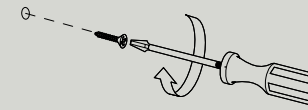
Place screws at the following distance:

- SH4 – Only 1 screw
- SH5 – 42cm
- SH6 – 65cm
- SH7 – 48cm (vertical)
- SH7 – 178cm (horizontal)



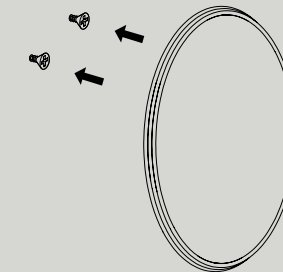
#### Step 2

Drill holes where you have placed the marks and insert the appropriate type of screws and plugs for the type of wall, on which the mirror should be mounted. Make sure that the head of the screw sticks out far enough from the wall, so that the suspension mounts on the mirror get an adequate grip.



#### Step 3

Once the screws are securely in place the mirror can be mounted. Make sure that the suspension mounts have a firm grip on the screws.



**&Tradition®**