

New assembling tool for GU10 light source

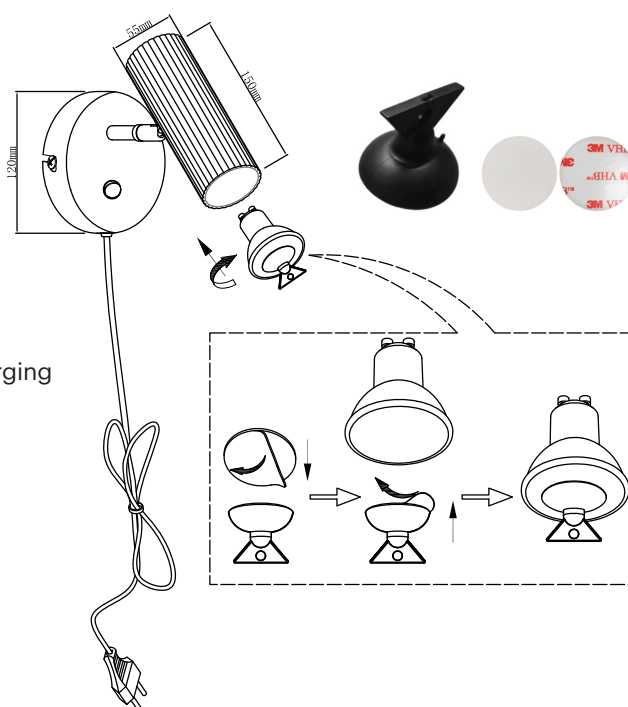
Items with GU10 lampholder delivered from week 13 have an assembling tool included in the packaging along with a sticker, which makes it easier to assemble the light source in the lampholder. Updated assembly instructions included.

Instructions

The sticker is loose next to the assembling tool. Tear off one strip and attach the sticker on the tool and then pull off the other strip. Attach the tool with the sticker to the GU10 light source and insert this against the lamp holder and tighten. This works both during assembly and disassembly. Once the light source is mounted, detach the tool, re-stick the strip and save the tool for future light source replacement.

Applies to the following articles:

- 4333 Wall lamp Hubble
- 4233 Table lamp Hubble Read
- 4332 Wall lamp / Clip spot Hubble
- 4433 Pendant Hubble 22
- 4533 Pendant Hubble 38
- 4633 Ceiling lamp Hubble 3
- 4833 Ceiling lamp Hubble 3 Long
- 4933 Ceiling lamp Hubble 5 Long
- 4832 Wall lamp Hubble 2
- 4231 Table lamp Hubble Read with wireless charging
- 4031 Floor lamp Hubble Read
- 9014 Floor lamp Swan
- 9214 Table lamp Swan
- 9315 Wall lamp Swan Mini
- 9614 Ceiling lamp Swan 3
- 9615 Ceiling lamp Swan 5



For further information and questions, please contact us.

E-mail: order@globenlighting.se

GLOBEN LIGHTING